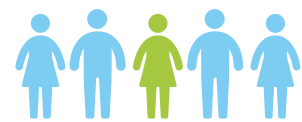


# A PROFILE OF POVERTY

IN EDMONTON UPDATED JULY 2019

People experience poverty when they lack, or are denied, economic, social and cultural resources to fully and meaningfully participate in the community.



**1 in 10** Edmontonians live in low income



(This represents 119,950 people.)

## Who is Living in Poverty?

women **53%**

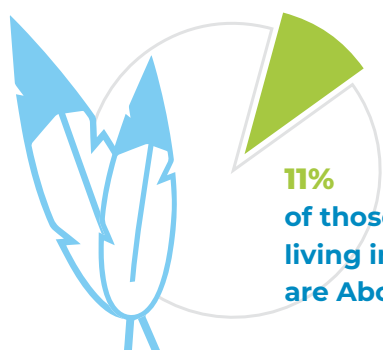
children **31%**

9,705 lone parent families are living in low income, of these,



**8,460 families are female-led.**

### RECONCILIATION



The rate of poverty for those identifying as Aboriginal is more than twice that of the non-Aboriginal population, with First Nations showing a rate

**3x** that of non-Aboriginal peoples.

### ELIMINATE RACISM



**42%** of those living in low-income identify as a visible minority

### AFFORDABLE HOUSING



**1 in 5** Edmonton families spend more than 30% of their income on housing.

### LIVABLE INCOME



Median income of a family of 4 in low income is **\$27,790/yr**



### LIVING WAGE

**LIVING WAGE FOR 2019:** \$16.51/hr assuming both parents working **35 hours per week.**



Modest living expenses for a family of 4 are **\$73,761.97/yr**

(Edmonton Social Planning Council)

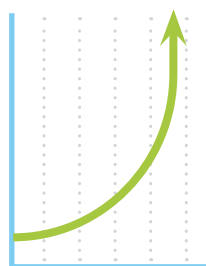
### AFFORDABLE AND QUALITY CHILDCARE



The median cost of child care for an infant is **\$937/mo.**

(Macdonald and Friendly)

To no longer be considered low income, existing incomes would have to **rise 65% on average.**



In 2018, Edmonton's Food Bank had an average of **22,033 individuals a month** receiving a food hamper.

(Edmonton's Food Bank)

### AFFORDABLE AND ACCESSIBLE TRANSIT

As of 2018, **38,649** Edmontonians accessed the subsidized Ride Transit passes to get to work, go to school, or participate in community.

(City of Edmonton)



### ACCESS TO MENTAL HEALTH AND ADDICTIONS SUPPORTS



Canadians in the **lowest income group** are **3 to 4 times more likely** than those in the highest income group to report poor to fair mental health.

(Mawani and Gilmour)

Unless otherwise indicated all information is for the Edmonton CMA, 2016 and includes people from Edmonton and surrounding areas. Full source citations are available online at [edmontonsocialplanning.org](http://edmontonsocialplanning.org) and [endpovertyedmonton.ca](http://endpovertyedmonton.ca)

### ! DATA ALERT

Recent population level data about household level food insecurity, wellbeing, social inclusion, and the interactions between poverty, justice and crime is not available.

[www.edmontonsocialplanning.ca](http://www.edmontonsocialplanning.ca)

endpoverty  
edmonton